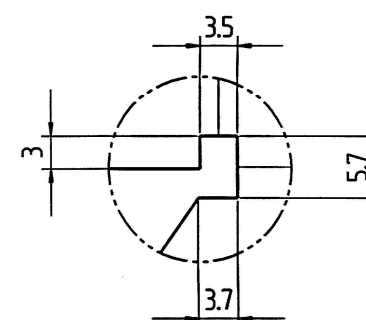
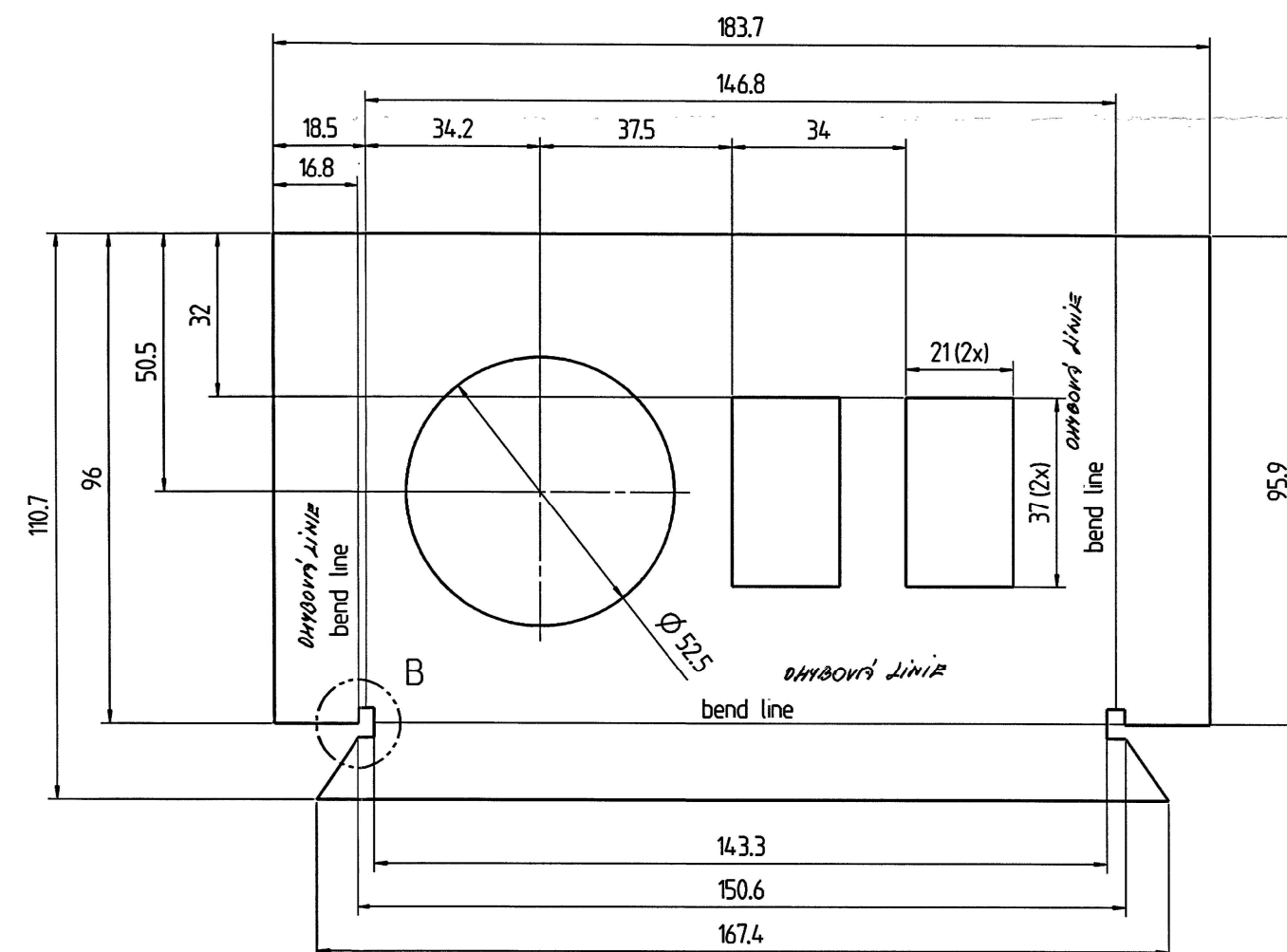
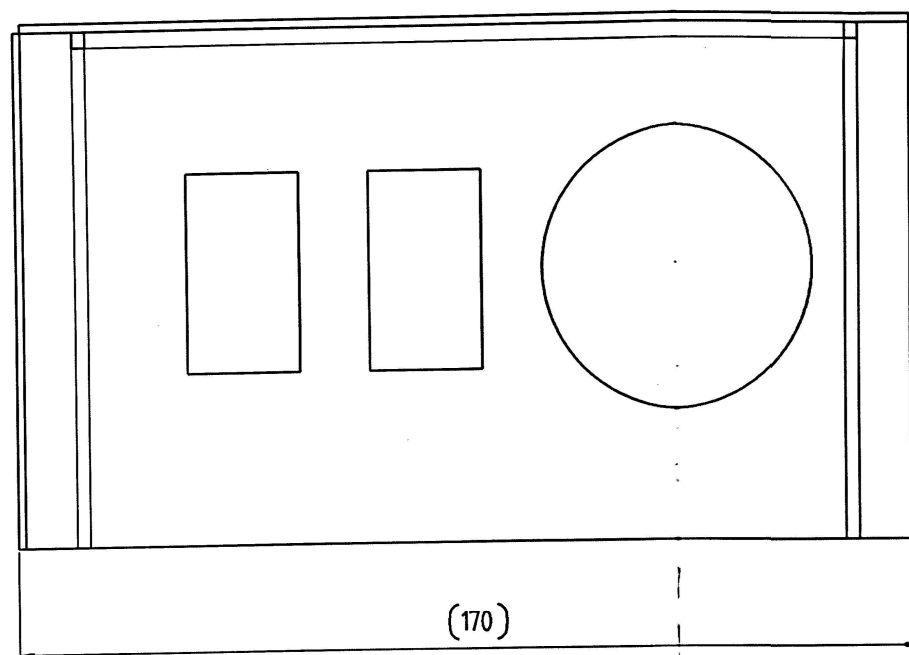
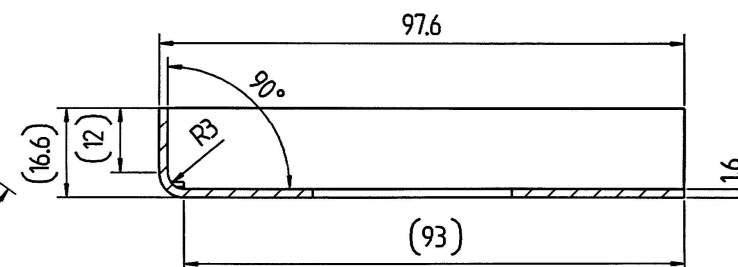


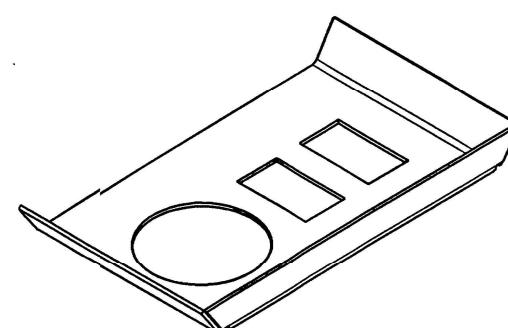
dne: 12-05-2016
Pub PROVEDLIA
 JANA PROKEŠOVÁ

1:1



B 2:1

1:2






outline length WN 10535		
outer	$VN\overline{2}JN'$	637.6 mm
inner	$VN\overline{1}TRN'$	397.0 mm

Tolerances for section
to DIN 6930 Part 2
accuracy grade m

STAV DODRŽENÍ:
BEZ OTŘEPŮ,
ODMĚŠTENÝ

Condition at time of delivery	
de-scaled (degree of purity SA 2 1/2 acc. ISO 8501-1)	-
without burrs acc. WN 11310	x
Permissible top-end rounding during flame cutting (also positive bead acc. WN 10572)	-
oil-free / free of grease	x
oiled	-
oiling permissible	-
Indicate the required condition at time of delivery with an X.	

First angle projection		 		01		State was RFO		STP V BVL RFD		T48032					
General tolerance (GT) in mm				Index		alteration		Change no		Fit		Toler.			
Size range				Inspection dim. 		Material: S235JR								Weight: in Kg	
$\begin{matrix} > 30 & > 120 & > 400 & > 1000 \\ \leq 30 & \leq 120 & \leq 400 & \leq 1000 \end{matrix}$				Auxiliary dim. ()		Blank no:								0.2	
GT coarse				Date		Name		Title:							
$\begin{matrix} L & 1 & 2 & 2 & 3 & 4 \\ \Delta & 1 & 2 & 4 & 6 \end{matrix}$				Drawn 29.11.2012		N.Sutton		side panel						PROD.	
Lengths (L) and angle $\angle \triangle = \pm GT$				Checked 13.12.2012		G.Hamilton								Scale	
Tolerance Symbols ISO 1101				Auth'd 18.12.2012		W.Edmunds								1:1	
\bigcirc roundness = $1/2a - Tol.$ $-\square$ straightness/flatness = GT \bigodot concentricity/run out = GT \equiv symmetry = GT $//$ parallelism = GT \oplus position = GT				M.check 10.1.2013		D.Thomas		Drawing number		$\frac{\quad}{\quad}$ $\frac{\quad}{\quad}$		1:2		Sheet: 1	
Languages:				Confidential document				14016110404				of: 1		1	
en				Refer to protection notice ISO 16016		Rep.				10mm					

13-05-2016
ARCHIV

O

Released

14016110404p001

A